

## Postal Code 78723

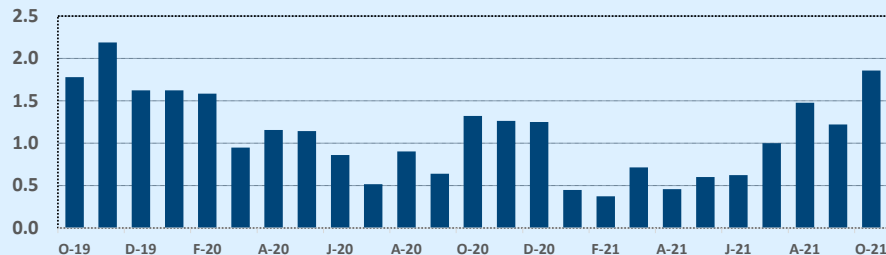
## Residential Statistics

Listings	This Month			Year-to-Date		
	Oct 2021	Oct 2020	Change	2021	2020	Change
Single Family Sales	31	28	+10.7%	342	307	+11.4%
Condo/TH Sales	4	6	-33.3%	103	85	+21.2%
<b>Total Sales</b>	<b>35</b>	<b>34</b>	<b>+2.9%</b>	<b>445</b>	<b>392</b>	<b>+13.5%</b>
New Homes Only	3	1	+200.0%	60	28	+114.3%
Resale Only	32	33	-3.0%	385	364	+5.8%
Sales Volume	\$22,282,045	\$16,684,026	+33.6%	\$271,412,890	\$191,518,165	+41.7%
New Listings	41	61	-32.8%	582	477	+22.0%
Pending	--	--	--	--	--	--
Withdrawn	2	1	+100.0%	12	14	-14.3%
Expired	2	1	+100.0%	12	14	-14.3%
Months of Inventory	1.9	1.3	+40.3%	N/A	N/A	--

Average	This Month			Year-to-Date		
	Oct 2021	Oct 2020	Change	2021	2020	Change
List Price	\$636,852	\$485,333	+31.2%	\$581,255	\$487,699	+19.2%
List Price/SqFt	\$368	\$295	+24.8%	\$351	\$292	+20.5%
Sold Price	\$636,630	\$490,707	+29.7%	\$609,917	\$488,567	+24.8%
Sold Price/SqFt	\$367	\$298	+23.1%	\$369	\$292	+26.2%
Sold Price / Orig LP	99.3%	101.0%	-1.7%	105.0%	99.9%	+5.1%
Days on Market	25	10	+149.8%	19	24	-20.5%

Median	This Month			Year-to-Date		
	Oct 2021	Oct 2020	Change	2021	2020	Change
List Price	\$592,076	\$455,000	+30.1%	\$550,000	\$450,000	+22.2%
List Price/SqFt	\$377	\$289	+30.6%	\$350	\$291	+20.4%
Sold Price	\$599,900	\$468,500	+28.0%	\$580,000	\$455,900	+27.2%
Sold Price/SqFt	\$378	\$300	+25.8%	\$365	\$292	+25.2%
Sold Price / Orig LP	100.0%	100.0%	+0.0%	101.7%	100.0%	+1.7%
Days on Market	16	6	+166.7%	6	6	--

### Months of Inventory - Last Two Years

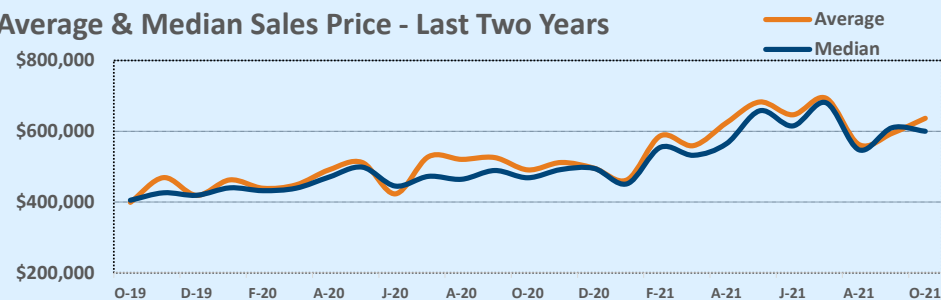


## Independence Title

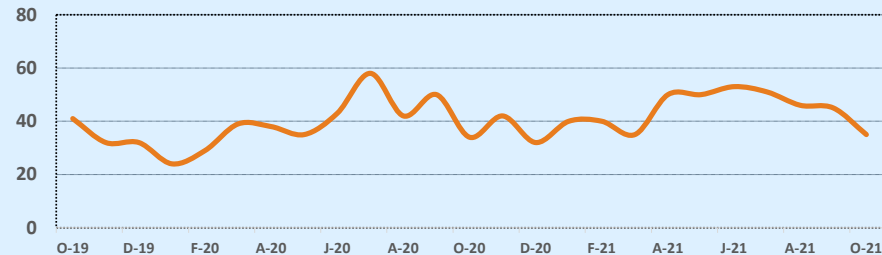
## October 2021

Price Range	This Month			Year-to-Date		
	New	Sales	DOM	New	Sales	DOM
\$149,999 or under	1	--	--	1	--	--
\$150,000- \$199,999	--	--	--	7	8	21
\$200,000- \$249,999	1	--	--	5	3	87
\$250,000- \$299,999	--	--	--	9	5	8
\$300,000- \$349,999	--	1	10	9	18	16
\$350,000- \$399,999	1	2	5	33	21	47
\$400,000- \$449,999	1	2	11	30	30	37
\$450,000- \$499,999	4	2	44	73	44	27
\$500,000- \$549,999	4	7	43	60	65	18
\$550,000- \$599,999	13	4	29	84	43	12
\$600,000- \$699,999	11	11	20	136	92	14
\$700,000- \$799,999	4	1	12	55	43	10
\$800,000- \$899,999	--	2	48	35	37	16
\$900,000- \$999,999	1	--	--	26	14	9
\$1M - \$1.99M	--	3	3	19	22	5
\$2M - \$2.99M	--	--	--	--	--	--
\$3M+	--	--	--	--	--	--
<b>Totals</b>	<b>41</b>	<b>35</b>	<b>25</b>	<b>582</b>	<b>445</b>	<b>19</b>

### Average & Median Sales Price - Last Two Years



### Number of Sales - Last Two Years



Based on information from the Austin Board of REALTORS® (alternatively, from ACTRIS). Neither the Board nor ACTRIS guarantees or is in any way responsible for its accuracy. The Austin Board of REALTORS®, ACTRIS and their affiliates provide the MLS and all content therein "AS IS" and without any warranty, express or implied. Data maintained by the Board or ACTRIS may not reflect all real estate activity in the market.